

**NEXONPRODUCT**  
distribution parts  
www.nexontechnologies.com



**Saltillo, Coah.**

José García Rodríguez 2126  
Col. Universidad. C.P 25260  
\*52 (844) 430 9444  
\*52 (844) 430 9445

**Monterrey, N.L.**

Calle Cerro de Santiago #204  
Col. las Puentes, 2do sector  
San Nicolás de los Garza, N.L.  
(81) 80087569  
fax (81) 1404 0081

**Querétaro, Qro.**

Limonos 104 Int. 5  
Manzana M  
Col. Huerta Don Manuel  
(442) 295 0744  
(442) 295 0745

**Coatzacoalcos, Ver.**

José María Caracas 1803  
Col. Guadalupe Victoria  
C.P. 96520  
(921)2136586

Email Us: [servicioalcliente@nexontechnologies.com](mailto:servicioalcliente@nexontechnologies.com)

**...líderes en soluciones de automatización!**



# PROFIBUS<sup>®</sup>-Tester V4

➔ **Test of bus physics & communication with only one device: PROFIBUS Tester 4th generation: "All-in-one"**



The **PROFIBUS-Tester V4** allows full testing of live PROFIBUS segments with minimum influence on their operation. The tool reliably detects even transient faults that occur only sporadically. The integrated master simulator allows bus testing, even if the PLC is currently not in operation. Also single "suspicious" bus devices can be checked.

## Areas of application

- Installation, commissioning and inspection
- Troubleshooting and field device testing
- Analysing sporadic errors
- Optimization and protocol analysis
- Preventive maintenance, service
- Documentation and acceptance testing

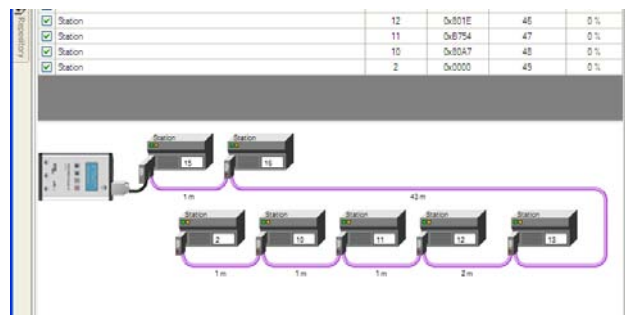
## Measuring functions

- Analysis of bus physics & communication simultaneously
- Quick test / Long-term test
- Long-term trend
- Topology-Scan
- Live-Status of all bus devices
- Telegram analysis
- Oszillogram analysis
- Master simulator, Trigger input/output

The **PROFIBUS-Tester V4** can be connected to a PC/notebook or run in stand-alone mode. The included software "PROFIBUS Diagnostics Suite" allows the visualising and detailed analysis of measurement results on the PC.

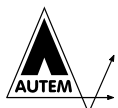
The software is easy to operate, so that even less experienced users can achieve excellent measuring results.

The **PROFIBUS-Tester V4** delivers highly reliable results that make it easy to identify, locate and correct fieldbus problems. It is the first test tool that can clearly distinguish whether a problem relates to a physical fault or defect, e.g. at cables or connectors, or to a communication problem with the PLC or bus devices.



For long-term tests **PROFIBUS-Tester V4** can remain stand-alone at the measuring location without PC. The tool reliably detects and analyses even transient faults that occur only sporadically.

The **PROFIBUS-Tester V4** also helps to save commissioning time. In addition, regular preventive tests ensure continuous reliable operation and increase plant availability. However, if problem occurs, **PROFIBUS-Tester V4** will locate the reason quickly and reliably. Unplanned system downtimes will be minimized.



**AUTEM GmbH**  
Dithmarscher Straße 29  
D-26723 Emden

Tel. +49-(0)4921-9610-0  
Fax +49-(0)4921-9610-96  
eMail: info@autem.de

[www.autem.de](http://www.autem.de)

# PROFIBUS<sup>®</sup>-Tester V4

## Technical features

Power-Supply	24 VDC $\pm$ 20 %, approx. 0.5 A, direct connection or external wide-range AC adapter 100 .. 240 VAC, 50/60 Hz
RS485 (DP)	<p>PROFIBUS D-sub connector, 9-pin, power supply for ext. bus termination</p> <p>Protocol and frame analysis: PROFIBUS DP and DPV1, automatic baud rate detection 9.6 kbit/s .. 12 Mbit/s</p> <p>Signal analysis: PROFIBUS DP, DPV1, FMS and MPI; signal quality index 0 .. 5000 determined from signal waveform, signal/noise ratio and rise time; signal sampling with 8/16 samples per bit</p> <p>Oscillogram display: Test range <math>\pm</math> 5 V, resolution 40 mV, sampling rate 192 MSamples/s, for signal details: 2,400 sampled points, for oscillogram analysis: 8,192 sampled points</p> <p>Topology scan: Active, maximum distance 230 m, accuracy <math>\pm</math> 2 m</p>
USB	USB 2.0, highspeed 480 MBit/s, galvanically isolated
Trigger	<p>IN (in prep.): L = 0 .. 0.8 V, H = 2.4 .. 24 V; pulse &gt; 10 <math>\mu</math>s, active high</p> <p>OUT: approx. 5 V, active low (connection to storage oscilloscope)</p>
Dimensions	H x W x D: 35 x 170 x 110 mm
Weight	Device without cable: approx. 0.45 kg, complete with carrying case: approx. 3.9 kg
Ambient conditions	<p>Operating temperature 0 .. 50 °C, Storage temperature -20 .. 70 °C, Air humidity 10 .. 90 % without condensation</p>
Certification	CE, FCC, VCCI
Operation	<p><math>\Rightarrow</math> via PC/Notebook or</p> <p><math>\Rightarrow</math> stand-alone mode mode via four-line display and four function keys</p>
Test results	Display and analysis with PC-Software „PROFIBUS-Diagnose Suite“

## Scope of delivery

**PROFIBUS-Tester V4** supplied in a practical aluminum case: Wide-range power supply for Europe and USA, connecting cable for direct power supply with 24 VDC, D-sub PROFIBUS adapter cable, USB cable, terminal block for trigger input/output, PC-software “PROFIBUS-Diagnostics Suite” on CD-ROM, user manual, “getting started” guide.



## Optional accessories

- *Adapterset M12 - connection technology*, connecting field devices with M12-connectors, incl. terminating resistor (Art.-No. APT4050E)
- *Mobile power supply*, external accu- and power supply kit, incl. 24 VDC/1.5 Ah accu with battery charger (230 VAC) and carrying case (Art.-No. APT4060E)
- *Digital leakage current clamp*, localisation of improper shield currents resulting from earthing, equipotential bonding or EMC problems. 40 .. 1.000 Hz, MIN/MAX, DATA HOLD, ever-ready case, measuring cables / fits in empty compartment of aluminum case (Art.-No. APT4070E)
- *D-Sub - service adapter PROFIBUS-DP* service interface with active bus termination and 90° connector for PROFIBUS DP (Art.-No. APT4080E)
- *M12 - service adapter PROFIBUS-DP*, consisting of M12 T-connector, sealing cap and M12 connection cable 1 m (Art.-No. APT4090E)

## To order

PROFIBUS-Tester V4 (Art.-No. APT4000E) and optional accessories - please refer to current price list.

